

BWT ULTRA Water Filter System

System model: MX10 Cartridge model: QX1524

Specifications

Water pressure – 80 kPa min – 860 kPa max

Water temperature – Use on cold water tap only. 4 – 40 deg C

Water Flow – 3.8 litres per minute

Notes

WARNING: For correct operation of this appliance it is essential to observe the manufacturers instructions.

Flush system for 30 seconds after periods of non use exceeding 7 days.

CAUTION Do not use with water that is microbiologically unsafe or of unknown quality without adequate disinfection before or after the system. Systems certified for cyst reduction may be used on disinfected water that may contain filterable cysts.

Make certain the installation complies with all state and local laws and regulations.

Filter cartridge change recommended every 12 months. Use only cartridges suitable for this appliance.

Contact the manufacturer or reseller for further information.

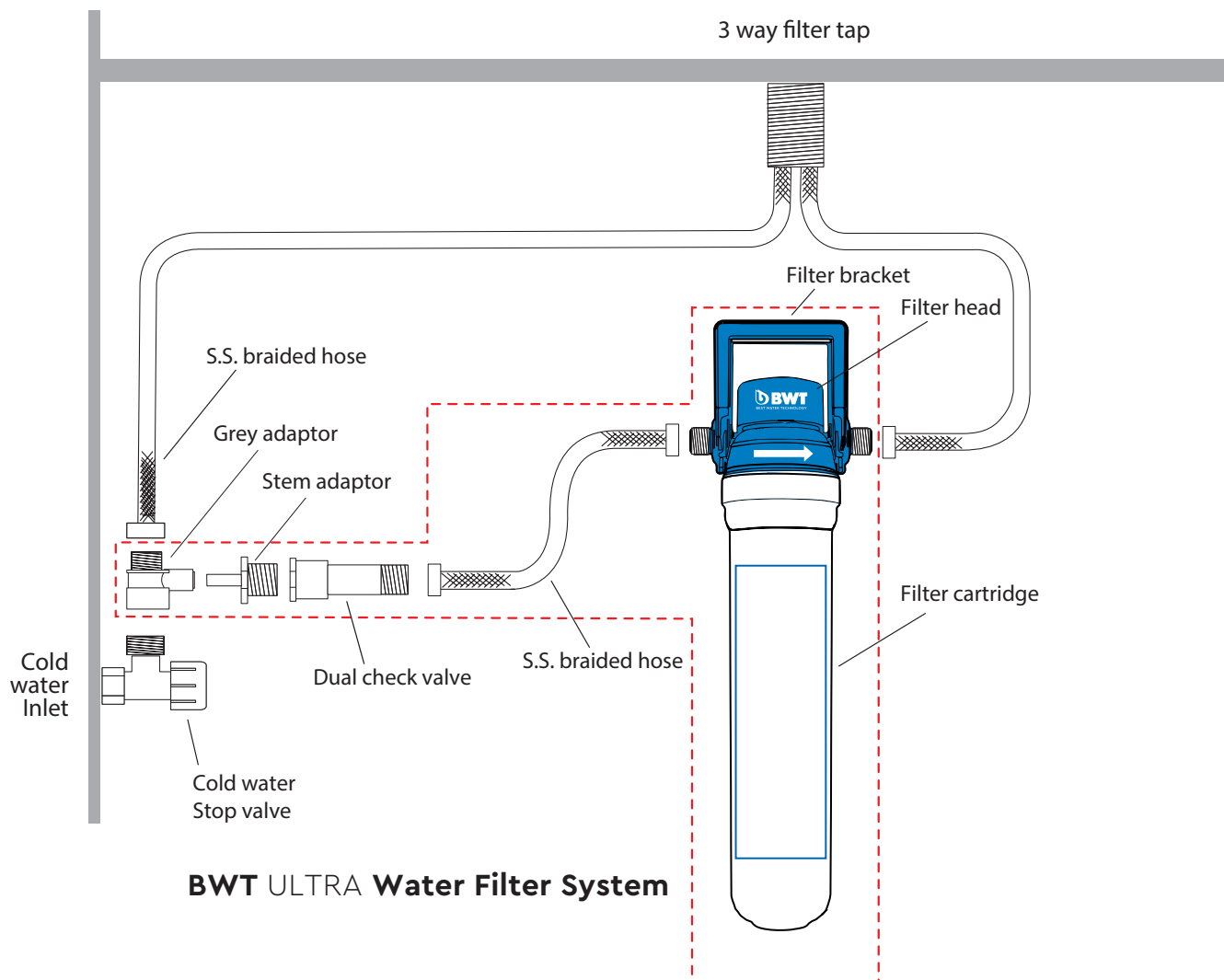
Please follow these installation instructions to ensure the water filter system is installed correctly.

Tools needed;

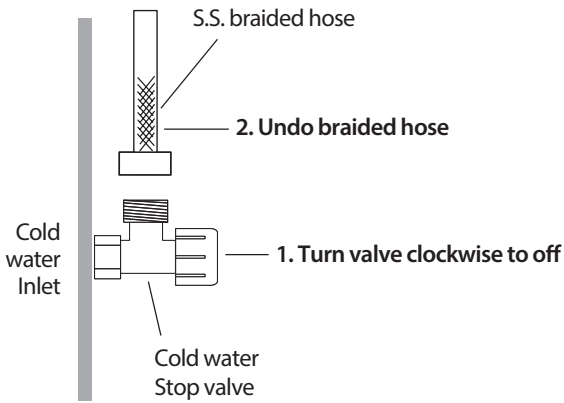
Small adjustable wrench

Drill and screwdriver to fit the mounting bracket

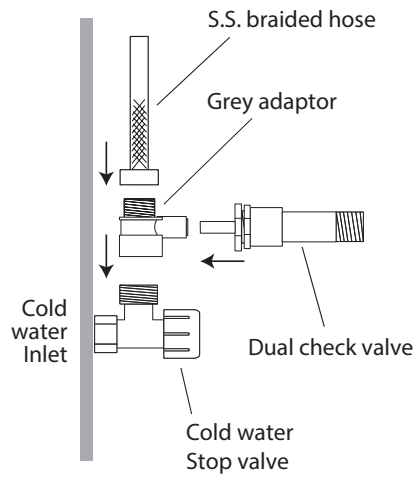
Unpack your filter system to ensure all components are supplied – see main drawing to identify all parts



Step 1

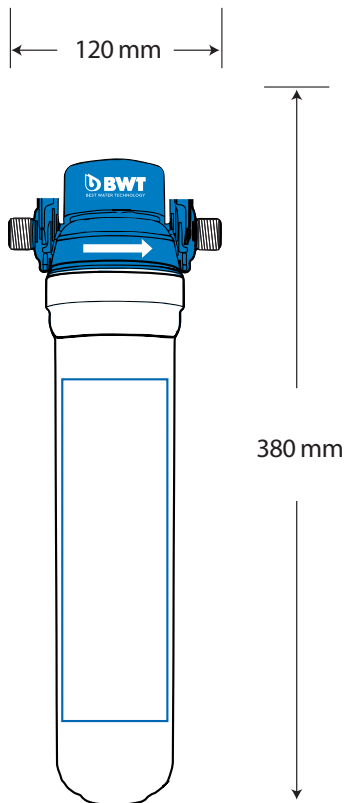


Step 2



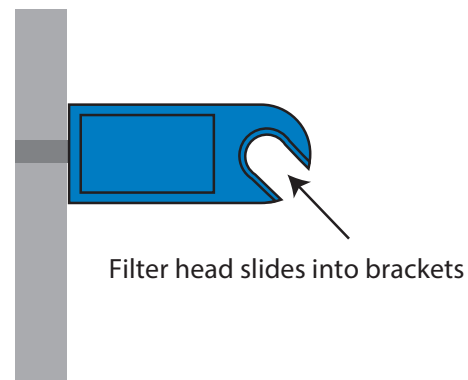
Step 3

Find suitable location for water filter installation. Allow enough space below the filter cartridge for changeout purposes.

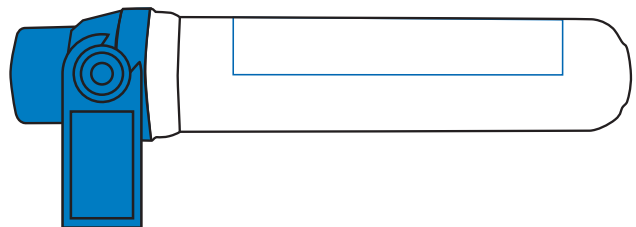


Step 4

Install mounting bracket and fit filter head and cartridge into mounting bracket.



Filter system can be mounted horizontally

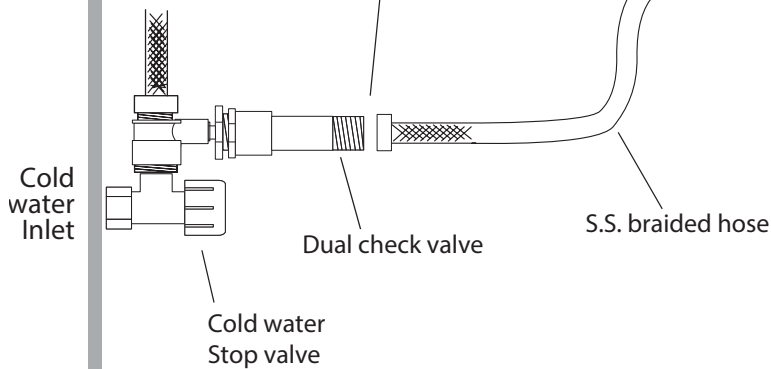


3 way filter tap

BWT ULTRA Water Filter System

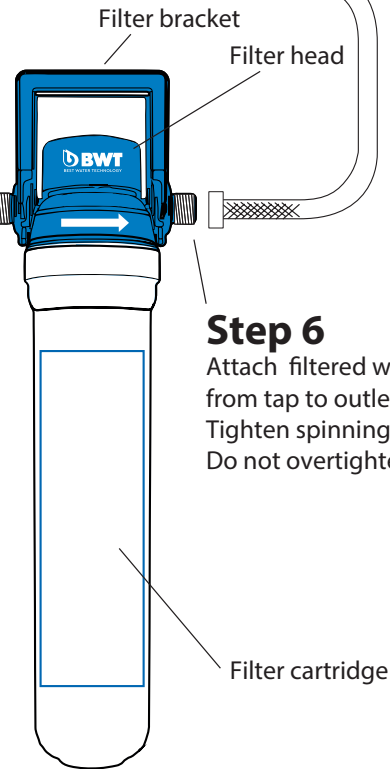
Step 5

Attach SS braided hose to connect Dual check valve to inlet of filter head
Tighten spinning nuts onto threads.
Do not overtighten.



Step 6

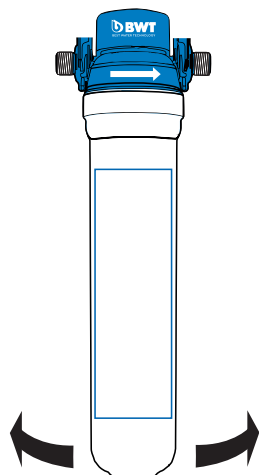
Attach filtered water SS braided hose from tap to outlet of filter head.
Tighten spinning nuts onto threads.
Do not overtighten.



Step 7 The filter tap water filter is ready for use

Slowly turn on the cold water stop valve
Check for leaks
If no leaks turn filtered water tap on

Discard first 5 liters of filtered water
Enjoy BWT filtered water!



Unscrew
to undo

Screw in
to fit

Changing cartridges

Turn off cold water stop valve

Open filter water tap to relieve pressure. Water will not flow from filtered water outlet

Hold filter cartridge firmly and unscrew cartridge out of the filter head.
Dispose of cartridge

Insert and screw in new filter cartridge till cartridge stops turning

Slowly turn on the cold water stop valve

Air and water will flow from filtered water outlet

Discard first 5 liters of filtered water

Enjoy BWT filtered water!

Performance Data Sheet

Specifications		
Chlorine reduction Tested to NSF/ANSI 42	Influent ave; 2.12 ppm 30,000 litres	Effluent ave: 0.25 ppm
Australian Drinking Water Guideline value	5 ppm	
NZ Drinking water standards	5 ppm	
VOC reduction claim	N/A	
% Reduction	Testing must exhibit 50% reduction	

Testing Parameters –Flow 3.78 lpm , Temp 23°C+/- 1°C, pH 7.8+/- 0.5, Pressure 60 psi

Treatment and Tests

Class	Treatment Type	Function	Pass
I	Microbiological Status Bacteriostatic	Will stop bacteria increasing	N/A
II	Microbiological Treatment		N/A
IIa	Bacteria removal	Will remove or inactivate bacteria	N/A
IIb	Virus removal	Will remove or inactivate virus	N/A
IIc	Protozoa removal	Will remove or inactivate Cryptosporidium and Giardia	N/A
III	Turbidity and particulate reduction	Will reduce cloudiness	N/A
IV	Taste/Odour reduction	Will reduce taste and odours	YES
V	Chemical Treatment	Will decrease chlorine compounds	YES

The substances reduced by this product are not necessarily in your water

Performance will vary based on local water conditions. Replacement elements and parts are available from your original supplier.

Warranty Statement – BWT Australia warrants that the products supplied will be free from any defects in workmanship or materials for 12 months from the date of purchase. Further, the warranty provided herein applies only when products are installed in accordance with installation instructions, used within the product specifications and service life; beyond which time or use BWT is absolved of any and all liability for any use of the product. No liability is accepted where pressure, temperature or other specifications are exceeded. The warranty does not cover the service life of the filter cartridge.

In the event of defect or non-conformity, buyer shall properly notify BWT in writing, supplying proof of purchase dates, installation dates, and will protect and retain the products for investigation. There are no other warranties, either merchantability or fitness, either expressed or implied except as excluded by law.

Manufacturer
BWT Australia
 4 / 273 Williamstown Road
 Port Melbourne VIC 3207
 Tel 1 300 720299
 sales@bwtaustralia.com.au

